

Mathematics - Worksheet

Class - VI CH-5

Chapter - Understanding elementary shapes

Very short answer type questions:

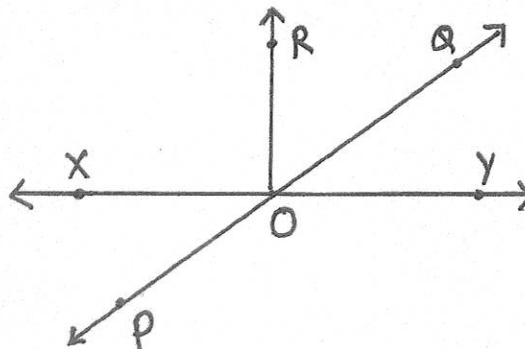
- Q1. If you stand facing North, and take a 'right angle turn' clockwise, which direction will you face?
- Q2. If you stand facing east and turn from east to west, what part of a revolution have you turned through?
- Q3. Rays AD and AC are drawn with A as the initial point, one towards the east and the other towards the north. What type of angle will these rays form? Also, name the angle.
- Q4. How many right angles make a straight angle?
- Q5. If each side of a triangle is 5cm, what kind of triangle is it?
- Q6. Complete each of the following, so as to make a true statement.
- a) A quadrilateral having exactly one pair of parallel sides is called a _____.
 - b) A quadrilateral having both pairs of opposite sides parallel, is called a _____.
 - c) A parallelogram whose each angle is a right angle is called a _____.

Short answer type questions

- Q7. What kind of angle is formed by the hands of a clock when they indicate?
- a) 9 O' clock
 - b) 6 O' clock
 - c) 12 O' clock
- Q8. A traffic policeman is standing facing east. In which direction will he face if he turns to the left through
- a) One right angle
 - b) Two right angles
- Q9. Draw:
- a) An isosceles right triangle
 - b) A scalene acute triangle

Q10. In the given fig. name the following angles as acute, obtuse, right, straight, or reflex:

- a) $\angle QOY$
- b) $\angle YOP$
- c) $\angle ROX$

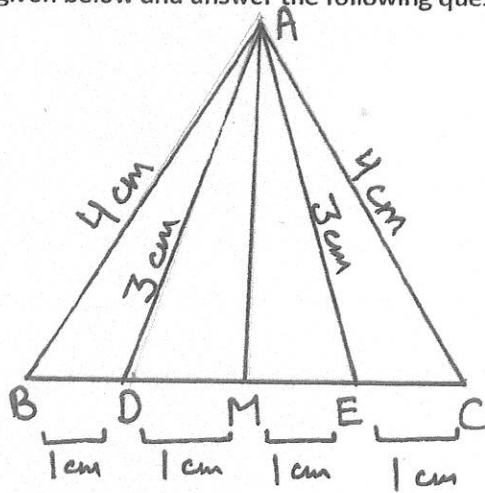


- d) $\angle QOX$
- e) $\angle POQ$

Q11. Tell whether each statement is always, sometimes or never true:

- (i) Intersecting lines are parallel.
- (ii) Intersecting lines are perpendicular.
- (iii) Perpendicular lines are intersecting.

Q12. Study the fig. given below and answer the following questions:



- a) Name the equilateral \triangle .
- b) Name the isosceles \triangle .
- c) Name the scalene \triangle .
- d) Name the acute \triangle .
- e) Name the obtuse \triangle .
- f) Name the right \triangle .